

PROSPECTIVE PETERSON PARENTS INFORMATION SESSION



PRINCIPAL YALIL NIEVES
ASSISTANT PRINCIPAL KATHLEEN HURLEY



Chicago Public Schools

INTRODUCTIONS:

**WHAT IS YOUR
and your
CHILD'S NAME?**

**WHAT DO YOU
KNOW ABOUT
PETERSON?**

**WHAT DO YOU
WANT TO KNOW
ABOUT
PETERSON?**



WHO I Am:



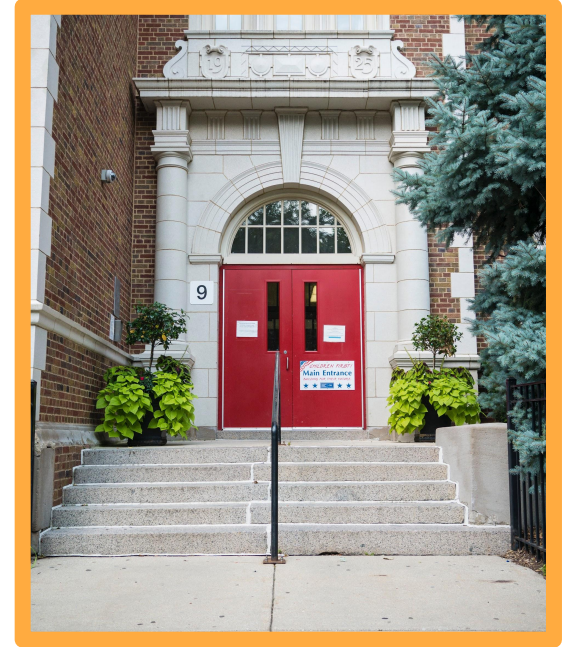
PRINCIPAL NIEVES



ASSISTANT PRINCIPAL HURLEY

Agenda:

- INTRODUCTIONS
- VIDEO
- PEOPLE OF PETERSON
- PETERSON BELIEFS & VALUES
- STATISTICS
- COMMUNITY ACCOMPLISHMENTS
- CURRICULUM IN ACTION
- SUPPORTING ALL STUDENTS
- PARTNERSHIPS
- COMMUNICATION
- QUESTIONS



THIS IS PETERSON:



WHAT WE BELIEVE AND VALUE:



VISION

GIVING RISE TO:
COLLEGE GRADUATES
COMMUNITY LEADERS
CULTURAL AMBASSADORS



PETERSON MISSION

PETERSON ELEMENTARY'S COMPREHENSIVE STEAM PROGRAM AND SOCIAL-EMOTIONAL EDUCATION PROVIDES AN INTERDISCIPLINARY AND INTEGRATED APPROACH TO LEARNING. WE DIFFERENTIATE SUPPORT TO A DIVERSE BODY OF LEARNERS, SEEING STUDENTS AS CURRENT CHANGEMAKERS AND FUTURE LEADERS IN THEIR COMMUNITY.

WHAT WE BELIEVE AND VALUE:

PETERSON VISION BASED VALUES

courage
COMPASSION
COLLABORATION
Perseverance
CRITICAL THINKING
PROBLEM SOLVING
SELF - MOTIVATION



WHO WE ARE:



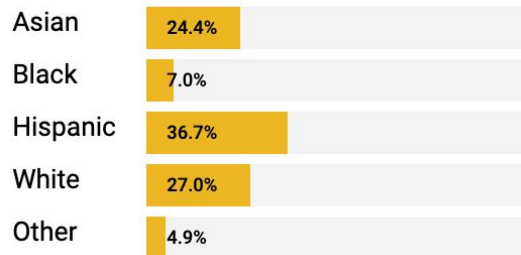
MEET OUR EDUCATORS!

[HTTP://WWW.PETERSON.CPS.EDU/PETERSON-PEOPLE](http://www.peterson.cps.edu/peterson-people)

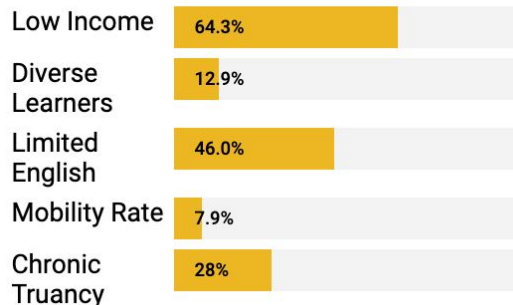
ABOUT PETERSON:

- EXEMPLARY NEIGHBORHOOD SCHOOL
 - AUTOMATIC ENROLLMENT IF IN ATTENDANCE BOUNDARIES
- PRE-K TO 8TH GRADE
 - 927 STUDENTS
 - 30+ LANGUAGES
 - 1 COMMUNITY
- DEMOGRAPHICS
 - HISPANIC/LATINO-36.7%
 - WHITE-27.0%
 - ASIAN-24.4%
- EXEMPLARY SOCIAL EMOTIONAL LEARNING SCHOOL
- STEAM DESIGNATION

The largest demographic at PETERSON is Hispanic. This demographic makes up 36.7% of the student population. The second greatest demographic is White at 27%.



There are 926 students enrolled at PETERSON. 64.3% are Low Income Students. 12.9% are Diverse Learners. 46% are Limited English Learners.



**AS A COMMUNITY WE
HAVE ACCOMPLISHED:**

WOW

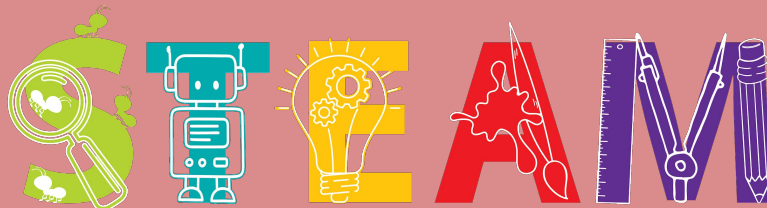
our
CHILDREN
are
HAPPY!

SEL TIME

STUDENT
VOICE

FAMILY
ENGAGE-
ment

exemplary



Science • Technology • Engineering • Arts • Mathematics

our
CHICKENS!

WOW

Peterson Winter Clothing Swap



Artwork by 3rd graders in room 122 and 111

Join us for interactive exhibits & presentations for the whole family to enjoy!

Peterson School's STEAM Night

Thursday, April 27, 2023
5-7 p.m.

Please enter at the Cafeteria. All children must be accompanied by an adult.

There will be dinner and raffle prizes too!



VOLUNTEERS NEEDED FOR PETERSON PANTRY



You can help by:

- Purchasing needed hygiene items, cleaning supplies, and non-perishable food to support families

Are you ab
help or w

JOIN US FOR MATH NIGHT

ENJOY DINNER, ENTER RAFFLES FOR PRIZES, LEARN MORE ABOUT MATH AT PETERSON & PLAY MATH GAMES!

WEDNESDAY,
NOVEMBER 16TH AT 5 P.M.

ALL PETERSON FAMILIES ARE WELCOME!
CHILDREN MUST BE ACCOMPANIED BY AN ADULT.
PLEASE ENTER THROUGH THE CAFETERIA.

WOW



WOW





WOW

This is what our students
Have to Say About Peterson:

"I love my school and the people here. The teachers are amazing!"

"My children are gaining an education from a lifetime! They are learning how to build relationships in ways that most adults do not know how! It is an incredibly warm caring and inspiring community, where I feel my children get both the best in academic training as well as social emotional learning.

"I love this school soooo much! I never want to leave."

"I like how all the teachers I have had so far at Peterson are respectful and give their students a choice."

"I like my school! There are a lot of people I know you can make friends. People are so nice here."

"What makes a child gifted and talented may not always be good grades in school, but a different way of looking at the world and learning" - Chuck Grassley. Teachers at Peterson engage the student and not just make them learn so much, but make school fun.

THE WHAT: CURRICULUM



K-4

- EL Education
- Wilson Foundations (K-2)
- Common Diagnostics

5-8

- MyPerspectives
- Literature Circles, Reciprocal Teaching, Authentic Tasks, Use of Technology



K-5

- Bridges
 - Encourages students to develop their own strategies for solving problems and engage in discussion about their reasoning and ideas.

6-8

- Connected Math Project 3 developed at Michigan State University
- Focus on inquiry and authentic tasks for student engagement

THE WHAT: CURRICULUM



PK-5: Teacher Created Units & PLTW

- Project Lead the Way (12 teachers trained)

6-8: Skyline

- Science Education for Public Understanding
Issues and Earth Science
Issues and Life Science
Issues and Physical Science

STEM

- Project Lead the Way
- Design/Engineering
- Robotics

Opportunities

- Science Fair
- Robotics Club/Competition



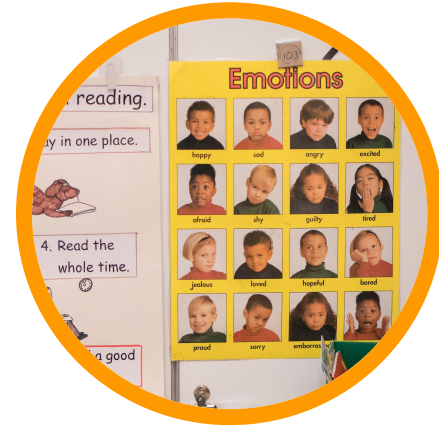
Social Studies Alive! and History Alive Curriculum

- Students Use Chromebooks to Access Consistently Updated Materials
- Lessons offer connections to literacy and the Common Core State Standards
- Lessons are engaging and provide opportunities for experiential learning

Skyline Civics Course (8th grade)

SOCIAL EMOTIONAL LEARNING:

- 30 minutes dedicated each day for social emotional learning including a weekly community circle
- Staff trained in restorative practices
- Student voice committees
- K-4: Second Step
- 5-8: Advisory model with teacher created units
 - Goal setting
 - Executive functioning
 - Advisory to advisory challenges



SUPPORTS FOR ENGLISH Learners

- 37.1% ENGLISH Language Learners
- 30 Languages
- Services
 - CERTIFIED STAFF (23 ESL, 3 BIL)
 - NEWCOMER SUPPORTS
 - K-8 PULL-OUT BY OUR ELPT
- TRAINING PROVIDED TO ALL TEACHERS ON BEST PRACTICES FOR ELS



SUPPORTS FOR DIVERSE LEARNERS

- CONTINUUM OF SERVICES:
 - BLENDED PREK
 - RESOURCE
 - INCLUSION (CO-TEACHING)
- SPECIAL ED TEAM:
 - 13 HIGHLY QUALIFIED SPECIAL EDUCATION TEACHERS
 - 1 FULL TIME CASE MANAGER
 - 12 PARAPROFESSIONALS



Parent organizations:



OTHER PARTNERSHIPS:



WAYS TO BE IN THE KNOW:

- WEBSITE: peterson.cps.edu
 - community calendar
 - SIGN UP FOR PETERSON PARENT PERIODICAL
- PETERSON PARENT PERIODICAL
 - sent home over THE WEEKEND
(ELECTRONICALLY)
- CALL US: 773-534-5070

